

FIXTURES FOR SEASON 1961-1962

1961	LEAGUE DIVISION III	Results F. A.	Atten- dances	1961	LEAGUE DIVISION III (continued)	Results F. A.	Atten- dances
Aug. 19	Lincoln City	A 2 0	7,597	16	LINCOLN CITY	H	
23 (W)	SHREWSBURY T.	H 3 0	11,040	22 (F)	Torquay United	A	
26	TORQUAY UNITED	H 3 1	9,924	26 (T)	Watford	A	
30 (W)	Shrewsbury Town	A 2 2	9,559	30	WATFORD	H	
Sep. 2	Swindon Town	A 1 1	9,825	1962			
6 (W)	HULL CITY	H 2 1	8,370	Jan. 6 (3)	Grimsby Town	A	
9	HALIFAX TOWN	H 2 1	9,672	13	SWINDON TOWN	A	
13 (W)	TORQUAY UNITED	A 1 1		20	Halifax Town	A	
	(F.L. Cup, Rd. 1)			27 (4)	READING	H	
16	Queen's Park Ran.	H 2 2	5,332	3	QUEEN'S PARK R.	H	
18 (M)	Northampton Town	A 1 1	12,946	10	Barnsley	A	
23	BARNLSLEY	A 3 0	14,350	17 (5)	PORTSMOUTH	H	
27 (W)	NORTHAMPTON T.	H 3 2	14,112	24	PETERBOROUGH U.	H	
30	Portsmouth	A 1 1	25,672	Mar. 3	Port Vale	A	
Oct. 4 (W)	NOTTS COUNTY	H 2 1	15,610	10 (6)	NEWPORT CO.	H	
7	Peterborough Utd.	A 2 1	17,258	17	Southend United	A	
9 (M)	Shrewsbury Town	A 2 1		24	GRIMSBY TOWN	A	
	(F.L. Cup, Rd. 2)			30 (SF)	Coventry City	A	
12 (Th)	Notts County	A 2 3	8,486	7	BRENTFORD	H	
14	PORT VALE	H 1 0	13,675	12 (Th)	Hull City	A	
21	Newport County	A		14	Reading	A	
28	SOUTHEND UTD.	A		20 (F)	CRYSTAL PALACE	H	
Nov. 4	1st Round F.A. Cup			21	BRISTOL CITY	H	
11	COVENTRY CITY	H		23 (M)	Crystal Palace	A	
18	Brentford	A		28	Bradford	A	
25	2nd Round F.A. Cup			May 5	F.A. Cup Final		
Dec. 2	Bristol City	A					
9	BRADFORD	H					

FOOTBALL COMBINATION (Mid-week Section)				HAMPSHIRE LEAGUE Boscombe "A" Fixtures			
Aug. 23 (W)	Southend United	A 0 2		Aug. 19	BASINGSTOKE	H 4 0	1,080
30 (W)	SOUTHAMPTON	A 2 1	2,387	26	Cowes	H 1 0	577
Sep. 13 (W)	Coventry City	A 2 1		Sep. 2	FAREHAM TOWN	A 2 1	
20 (W)	SWINDON TOWN	H 3 0	2,837	9	Southampton "A"	A 2 3	1,147
Oct. 10 (T)	Brighton & Hove A.	A 0 1		16	SALISBURY	H 2 3	
25 (W)	Charlton Athletic	A		23	Portsmouth "A"	A 3 1	690
Nov. 1 (W)	CHELSEA	H		30	NEWPORT	H 7 0	
8 (W)	Leyton Orient	A		Oct. 7	WINCHESTER CITY		636
15 (W)	Birmingham City	A			(R-C Cup, Rd. 1)	2 0	
22 (W)	READING	H		14	Netley Sports	A	
29 (W)	WATFORD	H		21	READING "A"	H	
Dec. 6 (W)	Aldershot	A		Nov. 4	GOSPORT BORO.	H	
13 (W)	QUEEN'S PARK R.	H		11	Alton Town	A	
20 (W)	Millwall	A		18	SWAYTHLING ATH.	H	
26 (T)	FULHAM	H		25	THORNYCROFT	H	
1962				Dec. 2	ANDOVER	H	
Jan. 8 (M)	Fulham	A		9	Basingstoke	A	
17 (W)	SOUTHEND UTD.	H		1962			
24 (W)	Southampton	A		Jan. 6	Waterlooville	A	
31 (W)	COVENTRY CITY	H		13	Hampshire Senior Cup	A	
Feb. 6 (T)	Swindon Town	A		27	Reading "A"	A	
14 (W)	BRIGHTON & H.	H		Feb. 3	Gosport Borough A.	A	
20 (T)	Brentford	A		10	PORTSMOUTH "A"	A	
28 (W)	CHARLTON ATH.	H		17	Salisbury	A	
Mar. 7 (W)	Chelsea	A		24	Fareham Town	A	
14 (W)	LEYTON ORIENT	H		Mar. 3	ALTON TOWN	H	
21 (W)	Portsmouth	A		10	Thornycroft Ath.	A	
28 (W)	BIRMINGHAM C.	H		17	WATERLOOVILLE	H	
Apl. 4 (W)	Reading	A		24	Andover	A	
10 (T)	Watford	A		31	NETLEY SPORTS	H	
18 (W)	ALDERSHOT	H		Apl. 7	Swaythling Ath.	A	
23 (EM)	PORTSMOUTH	H		14	COWES	H	
30 (M)	Queen's Park Ran.	A		20 (GF)	Newport	A	
May 2 (W)	MILLWALL	H		21			
				23 (M)			
				28	S'THAMPTON "A"	H	

NEXT HOME MATCHES

Saturday, 21st October, 1961
HAMPSHIRE LEAGUE, DIVISION I

Saturday, 28th October, 1961
FOOTBALL LEAGUE, DIVISION III

Wednesday, 1st November, 1961
FOOTBALL COMBINATION

READING "A"
KICK - OFF 3 p.m.

SOUTHEND UNITED
KICK - OFF 3 p.m.

CHELSEA RESERVES
KICK - OFF 7.15 p.m.

Bournemouth & Boscombe

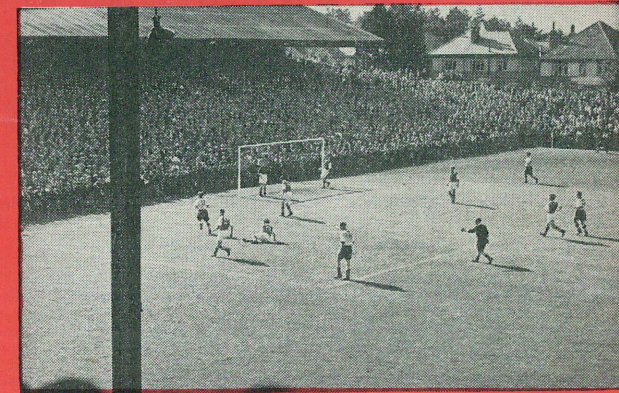
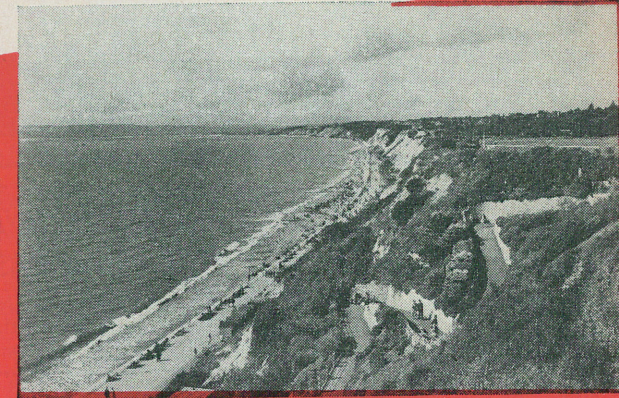
ATHLETIC FOOTBALL CLUB

No. 1895

No.

OFFICIAL PROGRAMME

4d



WEDNESDAY, 18th OCTOBER, 1961

BOURNEMOUTH AND BOSCOMBE

VERSUS

S.S.V. REUTLINGEN

FRIENDLY

KICK - OFF 7.15 p.m.

KIU YING Chinese Restaurant

232-232a, OLD CHRISTCHURCH ROAD
Famous for Cantonese and European Dishes

Set Three-Course Lunch (inclu. tea or coffee) 4/-
Set Four-Course Dinner (inclu. tea or coffee) 6/-
Open Every Day, inc. Sundays, 12 noon-11.30 p.m.
Table Reservations—Telephone Bournemouth 21092

Telephone :
Bournemouth 33170

Jeans (Bournemouth) Ltd.

Electrical Contractors and Engineers

Office and Shop :

71 CURZON ROAD, BOSCOMBE
BOURNEMOUTH

For local sport read

BOURNEMOUTH TIMES

Every Friday

Price 3d.

WALLIS & DAUGHTERS LTD.

Telephone: Bournemouth 44412

HOUSE FURNISHERS

Stockists for all Leading Makers

H.P. Terms Part Exchanges

146 SEABOURNE RD., BOURNEMOUTH

"UP THE CHERRIES"

WITH ALL GOOD WISHES from

ROBSONS (Bournemouth) LTD.

FOOD DISTRIBUTORS

Branches throughout the Town and Area

Head Office: Westbourne, Bournemouth

OMEGA

OFFICIAL
AGENTS

CHARLES FOX (Boscombe) LTD.

563 CHRISTCHURCH ROAD

Telephone - Bournemouth 33423

A wide selection of diamond rings, jewellery, watches
and clocks, fine gold and silverware always available.

ALL REPAIRS
UNDERTAKEN

In Association with
Charles Fox (Jewellers) Ltd., 21 The Arcade, Bournemouth

OMEGA

SOMEDAY YOU
WILL OWN ONE

PAINLESS
EAR-PIERCING

Motor Cycle Specialists

J. & D. STADDON LTD.

BOUNDARY ROAD, ENSBURY PARK
BOURNEMOUTH

Telephone: Winton 3421

Bournemouth Main Agents for Greeves

FOR LUXURY MOBILE LIVING consult

lford Caravans Ltd. OAK AVENUE
IFORD BRIDGE
CHRISTCHURCH. Telephone 1223

Distributors of: Penarth Superhome 31' x 9' 6"
£1175; Normandie Sunningdale 30' x 8' £875;
Lyndhurst Lyndome 36' x 8' £760; Bluebird
Pacific Kingsize 30' x 9' 6" £799; Paladin Chalet
30' x 9' £877. Finance Terms 3, 4 and 5 years.

SITES PROVIDED

HENBEST PUBLICITY SERVICE LIMITED

Head Office:

POST OFFICE ROAD
BOURNEMOUTH

Tel.: 25371 (3 lines)

For top quality printing in the
shortest possible time and at
the most reasonable prices

Printing Works:

WILSON ROAD, BOSCOMBE

Studios also at

COMMERCIAL ROAD
PORTSMOUTH

Telephone 27067

ENFIELD TYRE COMPANY

Car Seat Covers 39/6 per set
Largest Selection of Accessories
Three minutes from this Ground

1058 CHRISTCHURCH ROAD
POKESDOWN HILL

ST. CHRISTOPHER'S GARAGE

AUSTIN SALES and SERVICE

1191-7 CHRISTCHURCH ROAD

BOSCOMBE EAST

(Bottom of Pokesdown Hill)

Tel.: BOURNEMOUTH 44381 (2 lines)

BOURNEMOUTH AND BOSCOMBE ATHLETIC FOOTBALL CLUB COMPANY LIMITED

Registered Office: DEAN COURT GROUND, BOURNEMOUTH

Telephone: BOURNEMOUTH 35381

Directors: Messrs. W. J. PEEK, Chairman. D. W. HAYWARD, Vice-Chairman
H. L. NEWELL J. CASLAKE, M.B.E. J. E. CLARKE A. K. BICKNELL

Secretary: W. H. STACE. Hon. Medical Officer: Dr. A. S. OGDEN. Player-Manager: W. H. MCGARRY

DEAN COURT CHATTER

WILLKOMMEN ZU DER S.S.V. REUTLINGEN

DER Vorsitzende, Mr. W. J. Peek, Direktoren, Offizielle und die Spieler der Bournemouth und Boscombe Athletic Football Club willkommen die Offiziellen und die Spieler der S.S.V. Reutlingen auf's allerherzlichste. Wir hoffen von Herzen, dass das Spiel gestern Abend in Brighton und das heutige im Dean Court dazu beitragen wird die Freundschaft unserer beiden Länder zu fördern und wir hoffen, dass Sie schöne Erinnerungen von Ihrem Gastspiel mit in die Heimat zurücknehmen werden.

Wir sind sicher, dass das heutige Spiel grosse Begeisterung finden wird und unsere Spieler sehen einem freundschaftlichen Spiel mit Ihrer Mannschaft mit grosser Freude entgegen.

* * *

WELCOME TO S.S.V. REUTLINGEN

The Chairman, Mr. W. J. Peek, Directors, Officials and Players of the Bournemouth and Boscombe Athletic Football Club welcome most cordially the Officials and Players of S.S.V. Reutlingen to Bournemouth. We hope that last evening's game at Brighton and this evening's at Dean Court will help to increase the friendship that exists between our two countries, and that our visitors will have pleasant memories of their visit. We are certain that everyone will enjoy this evening's game and know that our players are looking forward to a match away from the tension of the usual League battles.

* * *

OUR VISITORS

Our Visitors, who come from a very beautiful part of South Germany, close to the Black Forest and not far from Castle Hohenzollern, are at present in third position in the West German League, Division I, which comprises 16 clubs. The German Champions, Nuremberg, are on top of the League with Eintracht Frankfurt in second position. S.S.V. Reutlingen have two International players in their team, centre forward Biesinger, who has played seven times in the German "A" Team and seven times in the German "B" Team, and goalkeeper Bogelein, who has played once in the German "A" Team. Outside left Dulz, inside right Sattler and inside left Scheurer are representative players.

In International friendly matches S.S.V. Reutlingen have beaten:

Away: Metz F.C. 5-2; F.C. Montevideo (in Germany) 3-0; Scunthorpe United 3-0.

Home: N.A.C. Breda 3-0; Swindon Town 2-0; Brighton and Hove Albion 5-1.

The results of their League matches so far this season are as follows:

Away: Schweinfurt 05 v. Reutlingen 0-2; Eintracht Frankfurt v. Reutlingen 2-2; Karlsruher Sport-Club v. Reutlingen 0-4; Spielvereinigung Furth v. Reutlingen 1-1.

Home: Reutlingen v. Nuremberg FC 0-1; Reutlingen v. Schwaben Augsburg 5-0; Reutlingen v. VfR, Mannheim 5-0; Reutlingen v. Bayern Hof 2-0.

"HOME or AWAY"

you cannot do better than

Travel by Train

Cheap tickets are issued to Boscombe and Bournemouth from most surrounding stations. Watch this space for details of excursions arranged for certain future 'away' fixtures.

SOUTHERN

SUPPORT PRIVATE ENTERPRISE

Supporters are earnestly requested to travel for the "away" matches by the following operators:

CHARLIE'S CARS

Pembroke Garage, Poole Hill
Phone 27211

EXCELSIOR

EUROPEAN MOTORWAYS LTD.
121, Holdenhurst Road Phone 27333

SHAMROCK & RAMBLER MOTOR COACHES LTD.

77 & 89, Holdenhurst Road Phone 27616
Arrange your own private parties

B. H. CARPENTER

BUILDER and DECORATOR

Jobbing Work a Speciality. Estimates Free
56 ALTON ROAD, WALLISDOWN
BOURNEMOUTH Tel. Winton 3864

TIN KON CHINESE RESTAURANT

Excellent Chinese and European Dishes
Open Daily 11.30 a.m. till 11.30 p.m.
(including Sundays)

SPECIAL FOUR-COURSE LUNCH - 3/9
815 CHRISTCHURCH RD., BOSCOMBE
Telephone: Bournemouth 44557

TRANSPORT AND GENERAL WORKERS UNION

ENJOY FULL SECURITY IN YOUR JOB
and whilst going to and from your work and home

FULL PARTICULARS OF MEMBERSHIP AT
382 Holdenhurst Road, Bournemouth.
Tel. Bournemouth 33646

TRENCHARDS

REMOVALS and STORAGE

18 WYCLIFFE ROAD, WINTON
BOURNEMOUTH

Telephone: Winton 35 & 935

FOR ALL BUILDING WORKS

W. J. SIBLEY & SON

BUILDING CONTRACTORS

'Phone Office and Works:
Bournemouth 118 ARNEWOOD ROAD
44662 SOUTHBOURNE

Mrs. J. E. WRIGLEY invites you to
THE NEW GRILLROOM

at THE HORNS INN

(Fully Licensed)

Open Daily until 10.30 p.m.

BURT'S HILL, COLEHILL, WIMBORNE
Telephone: Wimborne 374

FOR REPORTS ON TODAY'S MATCHES and CLUB NOTES

READ SATURDAY'S

"FOOTBALL ECHO"

On sale at all Newsagents

BOURNEMOUTH AND BOSCOMBE

Colours — Red Shirts, White Shorts

Right	GODWIN Goal		Left						
WOOLLARD 2	JONES 3								
McGARRY 4	NELSON 5		STANDLEY 6						
BUMSTEAD 7	WELLER 8		ARCHER 10						
Referee: H. G. NEW (Havant)		HIGHCLIFF HOTEL BOURNEMOUTH Ballroom and Reception Rooms available Fully Licensed. Tel. 27702		Linesmen: Red Flag R. WATERHOUSE (Bournemouth) Yellow Flag P. HAYWARD (Bournemouth)					
DULZ 11	SCHEURER 10		BIESINGER 9		SATTLER 8		WODARZIK 7		
FRITSCHI 6		SCHIESSL 5		KOSTORZ 3		RICK 2		JOST 4	
Left	BOGELEIN Goal		Right						

S.S.V. REUTLINGEN
Colours — White Shirts, Red Shorts

THE PERFECT CENTRE
FOR ALL LEADING MAKES OF

TYPEWRITERS

CLASSIC TYPEWRITERS LIMITED
ODEON BUILDINGS, BOURNEMOUTH
Telephone: Bournemouth 23456
SOUTHAMPTON . WINCHESTER . WEYMOUTH

CLAUDE STONE LTD.

TAILORS and OUTFITTERS

837-839, CHRISTCHURCH ROAD
BOSCOMBE - BOURNEMOUTH

We measure our success by the success of our measure



BADGER BEERS

Brewed by HALL & WOODHOUSE LTD., BLANDFORD FORUM

Henbest, Printers, Bournemouth

STANDARD TRIUMPH

BUY YOUR NEW HERALD 1200

from

CLIFF DRIVE GARAGE
CROSS ROADS, SOUTHBOURNE

Telephone: Bournemouth 47653

CAROUSELLE CLEANERS

SAME DAY QUALITY CLEANING

and

A TWO-HOUR EXPRESS SERVICE
487 - 489, CHRISTCHURCH ROAD
BOSCOMBE

Telephone: Bournemouth 34332

Automatic Oil Firing Installations

L. R. HOLLEY

PLUMBER & HEATING ENGINEER
Building Alterations and Repairs

105 Irving Road, Southbourne
BOURNEMOUTH

Telephone - Bournemouth 48006

MASTER BUILDERS FOR OVER 100 YEARS

G. A. WILSON & SON

Builders . Contractors . Decorators . Etc.

Estimates Valuations

71, SALISBURY ROAD
BLANDFORD

Telephone - Blandford 124

Tel.: Bournemouth 23178 Deliveries made Daily
SEEDS . PLANTS . BULB BOWLS . PLANT POTS
FERTILIZERS . COMPOST . PEAT . FIREWOOD
CAT AND DOG FOODS . POULTRY FOODS
BIRD SEEDS . DOG COLLARS AND LEADS

WALMSLEY'S

156 Holdenhurst Road . Bournemouth

A Home Win . . .

HUNTER SIMMONDS

PEN PICTURES :

S.S.V REUTLINGEN

Biesinger, Ulrich, forward. 28 years of age. A mechanic who joined the club from BC. Augsburg in 1960.

Bogelein, Karl, goalkeeper. 34 years of age. A salesman who joined the club from VFB. Stuttgart in 1957.

Dulz, Hans-Georg, forward. 25 years of age. A machinist who joined the club from Bor. Dortmund in 1959.

Fritsch, Werner, half back. 28 years of age. A carpenter who joined the club from 1.FC. Kaiseral in 1953.

Hammerle, Walter, forward. 24 years of age. A salesman who joined the club in 1957.

Jost, Gerhard, half back. 28 years of age. A machinist who joined the club from Un.Bockingen in 1955.

Kottel, Rolf, forward. 23 years of age. A salesman who joined the club from Ulm. 1846 in 1961.

Kostorz, Heinz, half back. 22 years of age. A bank clerk who joined the club in 1958.

Rick, Horst, full back. 25 years of age. A salesman who joined the club from Eintr.Braunschwg. in 1961.

Sattler, Horst, forward. 22 years of age. A salesman who joined the club in 1955.

Scheurer, Uwe, forward. 28 years of age. A bricklayer who joined the club from Fort.Dusseldorf in 1960.

Schiessl, Rudolf, full back. 24 years of age. A writer who joined the club from Schw.Augsburg in 1958.

Schmitt, Eduard, goalkeeper. 23 years of age. A driver/mechanic who joined the club from Griesheim 02. in 1960.

Skischus, Reinhold, full back. 27 years of age. A salesman who joined the club in 1955.

Weiss, Werner, forward. 25 years of age. A salesman who joined the club from Eintr.Braunschwg. in 1961.

Wodarzik, Norbert, forward. 26 years of age. A salesman who joined the club from 1.FC. Kaiseral in 1958.

* * *

BOURNEMOUTH SILVER BAND

Musical Director - **F. A. Payne**

in a programme of Music selected from their repertoire

THE DEAN COURT FOOTBALL SUPPORTERS' CLUB

Dean Court, Bournemouth.

Fans who back Boscombe, not only by their attendance at Dean Court but also by their support for the money-raising competitions run by Dean Court Football Supporters' Club and their auxiliary association, will be interested to learn of the new Cricket Sweepstake that is to be run.

At a meeting last week, Boscombe Directors discussed the project with D.C.F.S.C. and Auxiliary Association officers. The aim is to raise another £4,000 a year, and it will be, of course, to Boscombe's benefit.

How about a foxtrot after your football? Make this your programme on Wednesday, November 1st, when the D.C.F.S.C. Social Section are organising a Dance at the Royal Arcade Ballrooms.

That night, Boscombe Reserves play Chelsea Reserves, but Boscombe Directors, Officials and Players are being invited to go from Dean Court to the dance floor.

COLIN SMITH,
Publicity Officer.

* * *

INTERNATIONAL FOOTBALL LEAGUE MATCH

THE FOOTBALL LEAGUE v. THE ITALIAN LEAGUE

at Old Trafford, Manchester on **8th NOVEMBER, 1961**
Kick-off 7.30 p.m.

Tickets in advance for this match will be available from **The Secretary, Manchester United Football Club, Old Trafford, Manchester 16.**

* * *

FOOTBALL LEAGUE, DIVISION III
(Up to and including 14th October)

	P	W	D	L	Goals	
					F	A Pt.
BOSCOMBE	16	9	6	1	31	15 24
Portsmouth	15	9	5	1	26	14 23
Peterborough Utd.	16	10	1	5	41	37 21
Reading	16	9	1	6	33	30 19
Port Vale	16	7	4	5	22	19 18
Grimsby Town	16	8	2	6	24	24 18
Queen's Park Rangers	14	7	3	4	40	27 17
Crystal Palace	16	6	5	5	35	27 17
Bristol City	16	7	3	6	21	16 17
Coventry City	15	6	4	5	25	24 16
Watford	16	5	6	5	27	28 16
Northampton T.	16	6	3	7	29	22 15
Notts County	16	6	3	7	31	28 15
Hull City	15	5	5	5	21	18 15
Shrewsbury Town	15	5	5	5	27	27 15
Halifax Town	14	6	3	5	22	23 15
Bradford	14	7	0	7	27	26 14
Barnsley	16	6	2	8	30	37 14
Southend United	15	4	5	6	20	22 13
Swindon Town	16	4	5	7	23	31 13
Lincoln City	15	4	4	7	21	32 12
Torquay United	15	4	1	10	27	35 9
Newport County	15	2	3	10	19	36 7
Brentford	16	3	1	12	11	35 7

Woodville Motor Panel Works Limited

14, CHRISTCHURCH ROAD
Lansdowne - Bournemouth
Telephone Bournemouth 7285
Accident Damage Repair Specialists

G. SHEARS & SONS LTD.
COMPLETE BUILDING CONTRACTORS
DECORATING AND MAINTENANCE
21, OXFORD ROAD, BOURNEMOUTH
Telephone - - Bournemouth 20938
ELECTRICAL SERVICES (SHEARS) LTD.
ELECTRICAL ENGINEERS AND CONTRACTORS
21, OXFORD ROAD, BOURNEMOUTH
Telephone - - Bournemouth 27275
INSTALLATIONS, REPAIRS and MAINTENANCE

BOYLAND
AND SON

CONCRETE

869/873, RINGWOOD ROAD, BOURNEMOUTH Northbourne 770/6

PLEASE QUOTE
DEPT. 'F'

GARAGES
COAL BUNKERS
PAVING SLABS

FOR QUALITY FISH AND CHIPS
Make **OTTER'S** your **GOAL!**
FISH RESTAURANT
ASHLEY ROAD
(Christchurch Road end)
CAFE AND CARRY-AWAY SERVICE
Phone: Bournemouth 37624

For a Warm Welcome . . .
L. G. WILLIAMS
49, PARKWOOD ROAD
Telephone: Bournemouth 45191
Central Heating Specialists

GRAY'S

OXFORD RD. BOURNEMOUTH
BUILDERS' and PLUMBERS' MERCHANTS

(GRAY, DALLEN & LANE LTD.)

Telephone: Bournemouth 25262-7

COSY COACHES

120 ASHLEY ROAD, PARKSTONE

- ★ PRIVATE PARTIES
- ★ DAY TOURS
- ★ RACE MEETINGS

SELF DRIVE HIRE CARS

Parkstone 2250-1

Ashtree Riding School

PUREWELL - CHRISTCHURCH

Telephone 2642

Courses for preliminary and B.H.S.I. Horses at livery and for schooling. Adults' and children's classes
Hacking and Hunting

You Will Always Score If You Go To

RAY FISHER

MOTOR CYCLES

SALES SERVICE REPAIRS

189, BARRACK ROAD

CHRISTCHURCH

Telephone: 1990

WANTED

Fit young men with a taste for
Adventure An Interest in Weapons Shooting
If You are Tough, Self Reliant and Public Spirited enough, apply to

THE DORSET REGIMENT T.A. CENTRE
FLEETSBRIDGE, POOLE

Tel.: Poole 698. Tuesday Evenings 7.30—9.30

There get details about a Remunerative and Entertaining hobby for some of your leisure hours.